

University of Wyoming
Detail for Agency 067 (UW) Only^(a)
Prepared for the Joint Appropriations Committee

		Years								
Graph		FY 2004	FY 2005	FY 2006	FY 2007	FY 2008	FY 2009	FY 2010	FY 2011	FY 2012
1 (067 Approp.)	General Fund - UW (067)	\$ 121,176,785	\$ 137,359,741	\$ 137,360,429	\$ 154,753,993	\$ 162,741,946	\$ 180,033,988	\$ 172,669,397	\$ 177,208,175	\$ 179,008,175
2 (Revenue)	Total Section I Revenue	\$ 181,917,696	\$ 195,384,282	\$ 195,013,488	\$ 210,644,330	\$ 219,325,316	\$ 240,183,136	\$ 237,456,423	\$ 240,926,239	\$ 252,439,110
	Total Section II Revenue	\$ 100,905,090	\$ 113,607,187	\$ 114,977,988	\$ 127,554,856	\$ 146,929,947	\$ 161,245,583	\$ 176,624,112	\$ 246,212,127	\$ 265,011,032
	Combined Revenue	\$ 282,822,786	\$ 308,991,469	\$ 309,991,476	\$ 338,199,186	\$ 366,255,263	\$ 401,428,719	\$ 414,080,535	\$ 487,138,366	\$ 517,450,142
3 (Expend.)	Total Section I Expenditures	\$ 181,917,696	\$ 195,384,282	\$ 195,013,488	\$ 210,644,330	\$ 219,325,316	\$ 240,183,136	\$ 237,456,423	\$ 240,926,239	\$ 252,439,110
	Total Section II Expenditures	\$ 100,905,090	\$ 113,607,187	\$ 114,977,988	\$ 127,554,856	\$ 146,929,947	\$ 161,245,583	\$ 176,624,112	\$ 244,105,282	\$ 258,926,508
	Combined Expenditures	\$ 282,822,786	\$ 308,991,469	\$ 309,991,476	\$ 338,199,186	\$ 366,255,263	\$ 401,428,719	\$ 414,080,535	\$ 485,031,521	\$ 511,365,618
4 (13) (Student FTE) (b)	College of Ag & Natural Resources	779.2	827.6	874.3	817.3	797.5	808.1	870.3	966.1	1,017.6
	College of Arts & Sciences	5,984.7	5,944.5	5,872.4	5,947.2	6,168.4	6,234.6	6,510.7	6,490.4	6,449.7
	College of Business	1,102.1	1,136.7	1,097.6	1,046.3	995.8	999.8	950.8	969.6	985.0
	College of Education	1,627.7	1,645.3	1,603.7	1,437.0	1,407.6	1,358.6	1,488.9	1,396.2	1,441.6
	College of Engr & Applied Sci	902.6	867.3	859.2	866.5	860.6	889.3	953.8	1,031.7	1,008.5
	College of Health Sciences	1,389.2	1,375.1	1,396.6	1,443.6	1,435.5	1,500.2	1,535.8	1,548.7	1,615.4
	College of Law	360.6	374.4	379.6	383.7	380.8	370.3	372.7	386.1	370.3
	Other	144.4	132.6	173.8	173.7	133.0	186.6	178.3	403.2	320.3
	Total UW FTE Students	12,290.5	12,303.5	12,257.2	12,115.3	12,179.2	12,347.5	12,861.3	13,192.0	13,208.4
5 (Faculty FTE) (c)	College of Ag & Natural Resources	94.0	94.0	91.5	94.5	92.5	97.5	101.5	104.5	106.0
	College of Arts & Sciences	263.3	260.6	262.0	258.0	261.8	264.0	284.8	289.0	292.0
	College of Business	34.8	37.5	39.5	40.8	42.8	46.8	48.8	45.8	46.4
	College of Education	53.0	50.0	53.0	52.0	52.0	54.0	56.0	52.0	53.0
	College of Engr & Applied Sci	74.8	72.0	75.0	76.0	73.5	76.0	80.0	80.0	77.0
	College of Health Sciences	63.8	73.3	73.5	61.5	62.0	63.5	60.5	60.5	61.5
	College of Law	17.0	16.5	18.0	21.0	22.0	20.5	22.5	22.5	24.0
	Other	13.0	15.0	16.0	14.8	17.0	20.0	15.0	15.0	14.0
	Total UW Faculty FTE Employees	613.6	618.8	628.5	618.5	623.5	642.3	669.1	669.3	673.9
6 (All Other FTE) (c,d)	College of Ag & Natural Resources	263.6	272.1	255.0	271.9	276.4	280.7	272.4	272.7	274.8
	College of Arts & Sciences	211.3	242.4	235.3	242.2	247.0	249.5	249.6	250.1	255.1
	College of Business	29.0	27.3	28.5	25.4	26.5	26.0	25.0	25.5	26.5
	College of Education	29.1	28.0	33.5	28.6	34.0	36.0	36.3	34.5	31.3
	College of Engr & Applied Sci	73.8	74.4	75.2	79.1	78.8	85.1	89.2	83.4	80.1
	College of Health Sciences	155.5	137.8	168.4	99.9	102.6	105.4	96.3	97.5	118.5
	College of Law	12.0	13.0	12.0	15.0	15.0	16.5	17.5	17.5	17.8
	Other	1293.6	1302.4	1321.3	1313.8	1360.7	1404.5	1334.9	1335.2	1375.5
	Total UW All Other Non-Faculty FTE Employees	2067.8	2097.2	2129.2	2075.8	2140.9	2203.6	2121.0	2116.3	2179.4
7 (13)	Total Revenue per Student	\$ 23,011	\$ 25,114	\$ 25,291	\$ 27,915	\$ 30,072	\$ 32,511	\$ 32,196	\$ 36,927	\$ 39,176
	Section I & II Revenue	\$ 282,822,786	\$ 308,991,469	\$ 309,991,476	\$ 338,199,186	\$ 366,255,263	\$ 401,428,719	\$ 414,080,535	\$ 487,138,366	\$ 517,450,142

^(a) In FY 2007, the Medical Education Agency 167 was created by the legislature and moved from the College of Health Sciences.

^(b) Excludes WWAMI Medical Education FTE counts from Total FTE counts, beginning FY 2007.

^(c) Excludes Medical Education (Agency 167) from Total FTE counts, beginning FY 2007.

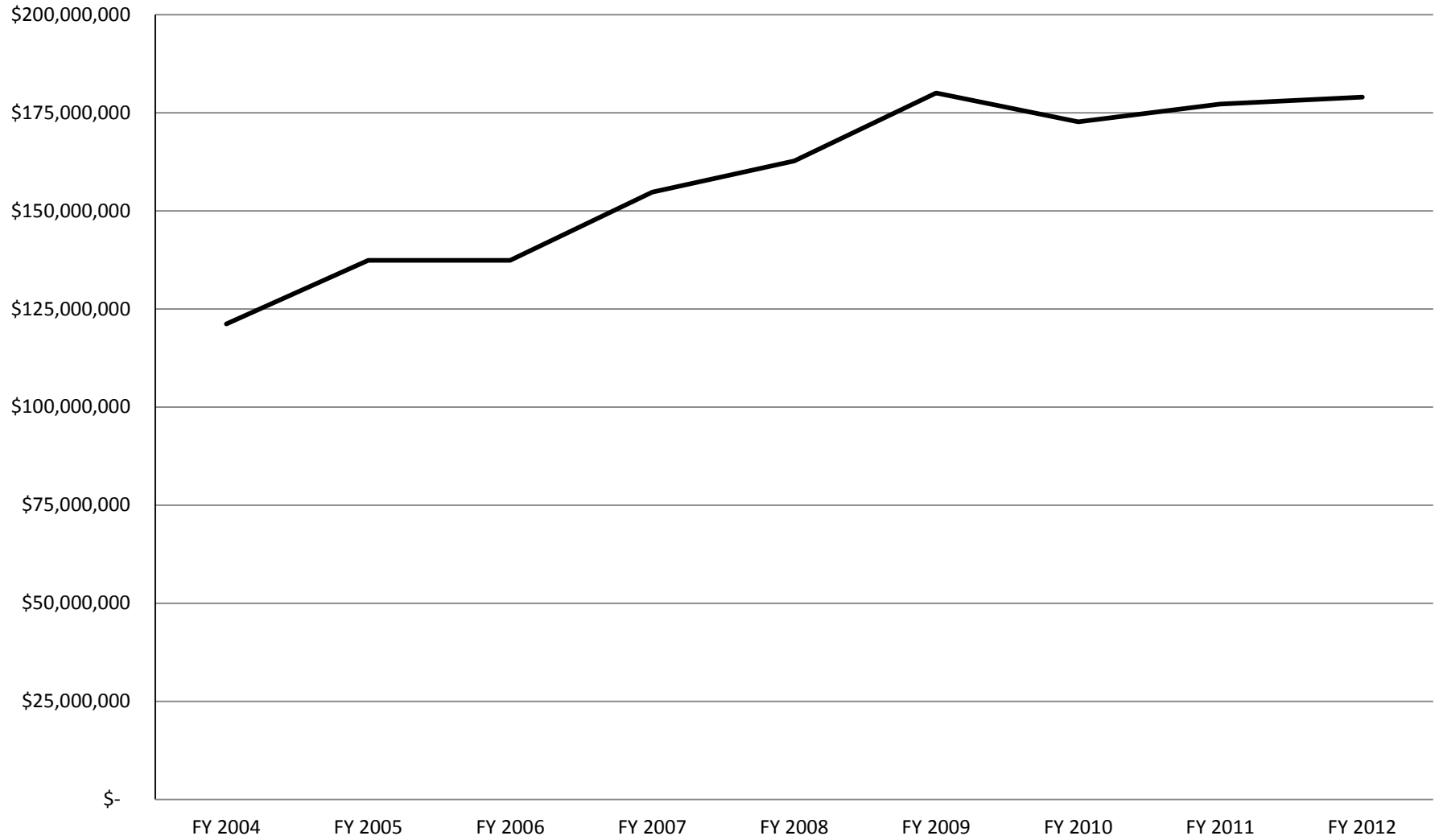
^(d) Includes administrators, clerical/secretarial, academic professionals, professional non-faculty, technical/paraprofessional, crafts/trades, and service/maintenance. "All-other-faculty" from the original report were mov

Additional Notes:

Faculty include assistant professors, associate professors, and full professors, including department heads.

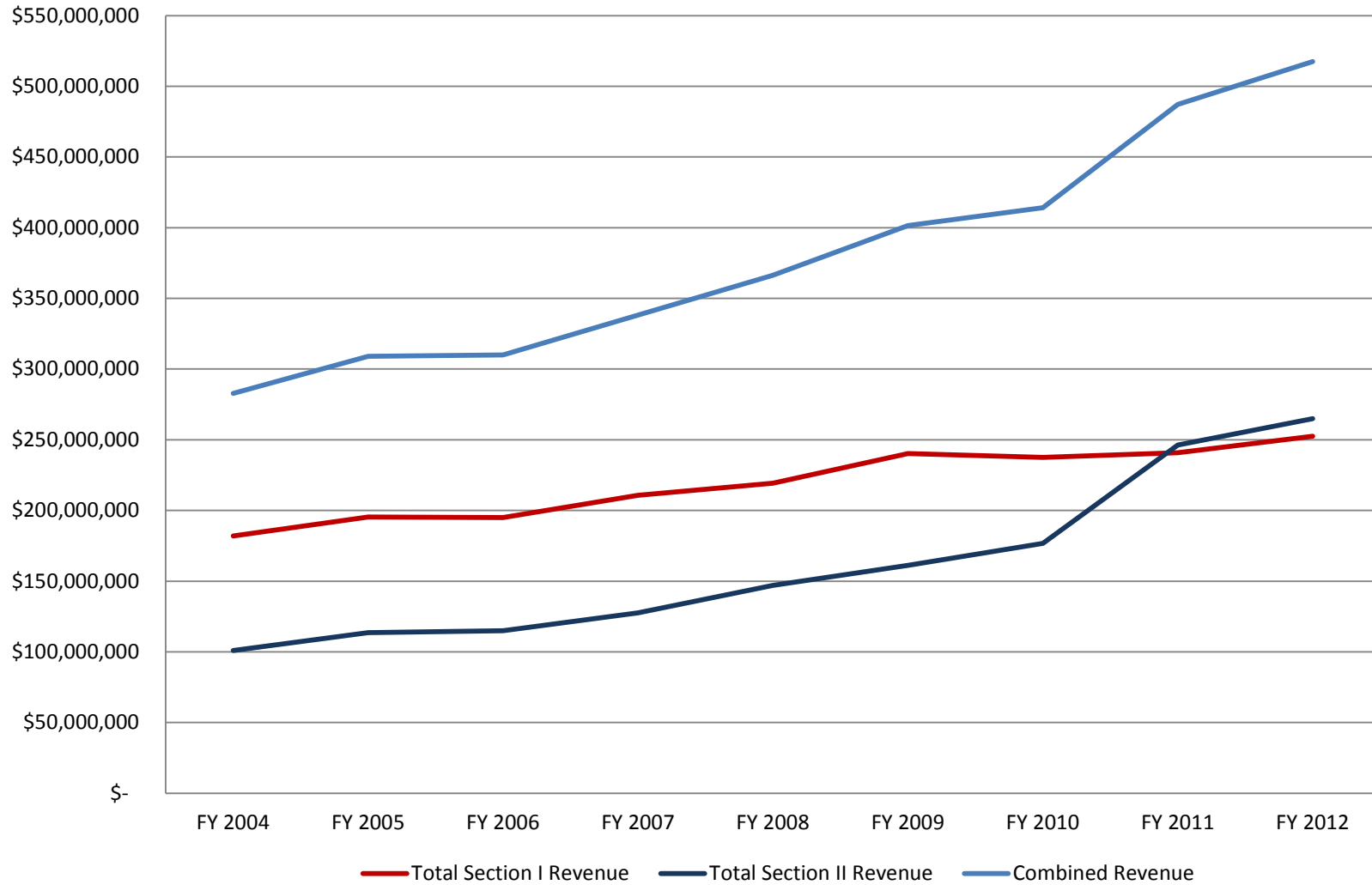
The category "staff" encompasses the academic personnel who are not classified as "professors". These include: lecturers, research scientists, and extension educators.

University of Wyoming (Agency 067) General Fund 067 Block Grant Appropriation Prepared for the Joint Appropriations Committee



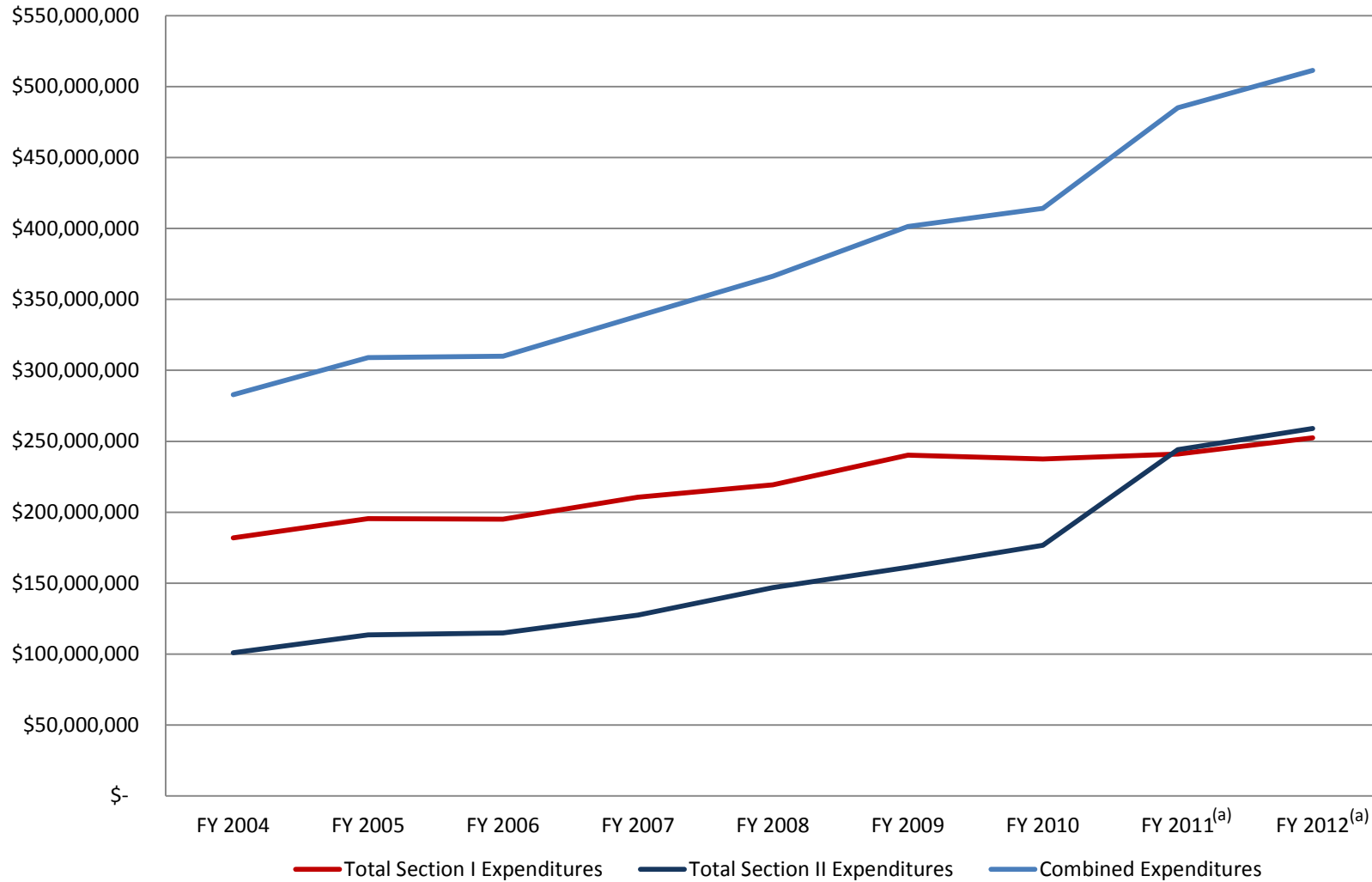
Source: University of Wyoming Budget History Report to the Joint Appropriations Committee, July 2012.

University of Wyoming (Agency 067) Total Section I and Section II Budgeted Revenue Prepared for the Joint Appropriations Committee



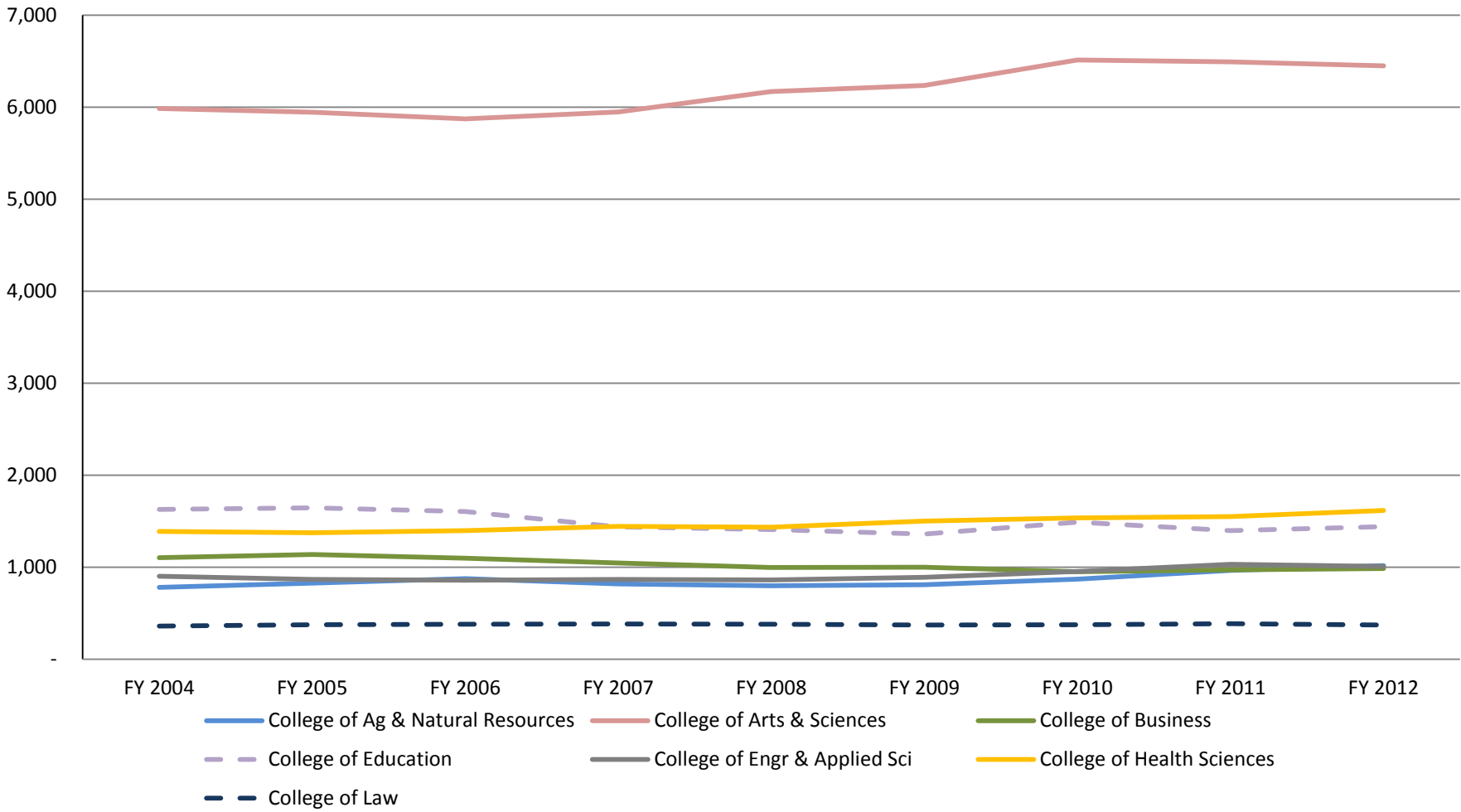
Source: University of Wyoming Budget History Report to the Joint Appropriations Committee, July 2012.

University of Wyoming (Agency 067) Total Section I and Section II Budgeted Expenditures Prepared for the Joint Appropriations Committee



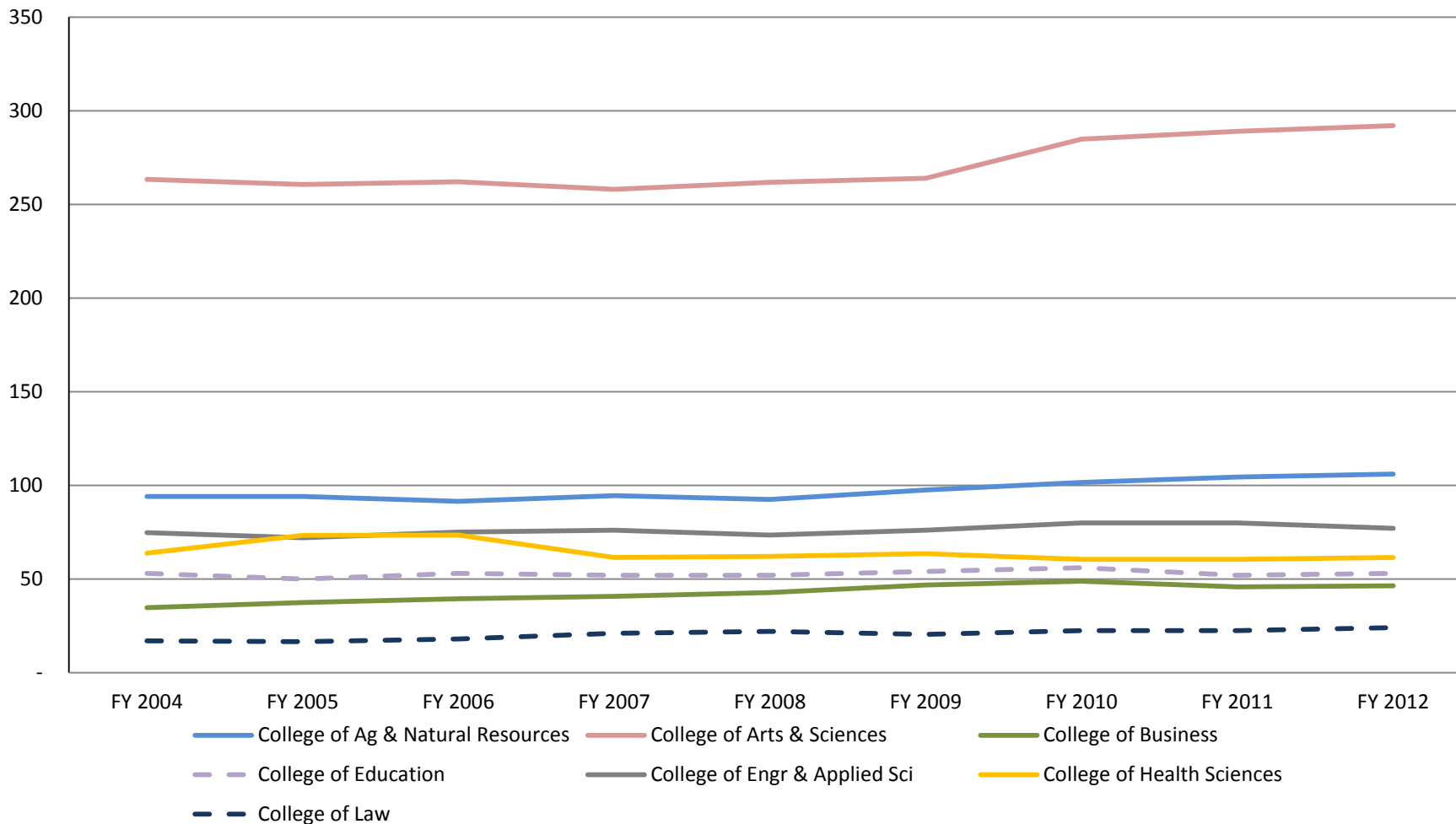
Source: University of Wyoming Budget History Report to the Joint Appropriations Committee, July 2012.

University of Wyoming (Agency 067) FTE Count of Students Prepared for the Joint Appropriations Committee (Student credit hours - based on faculty home department)



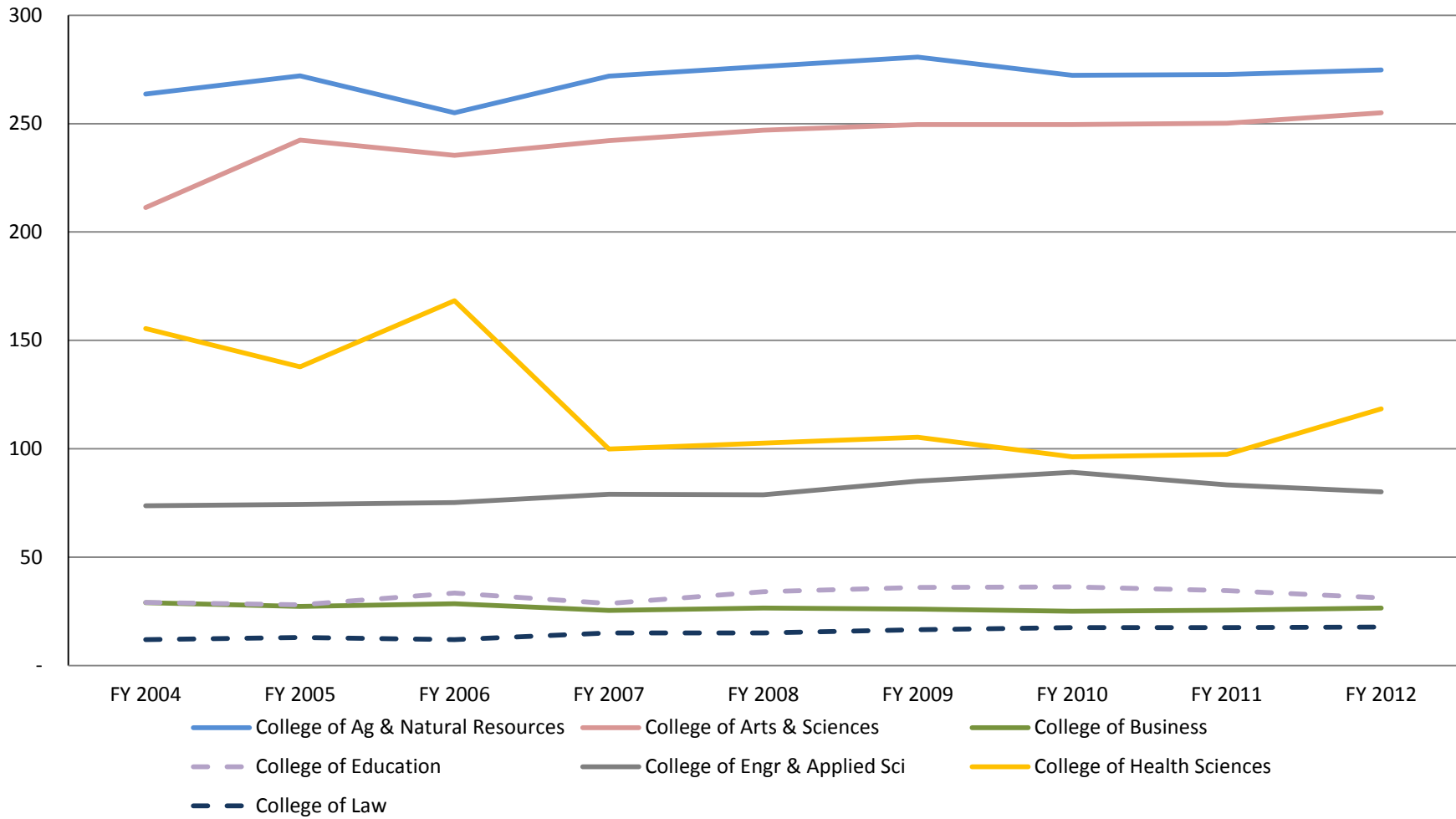
Source: University of Wyoming Academic Planning Standard Data Sets.

University of Wyoming (Agency 067) Faculty FTE Employees Prepared for the Joint Appropriations Committee



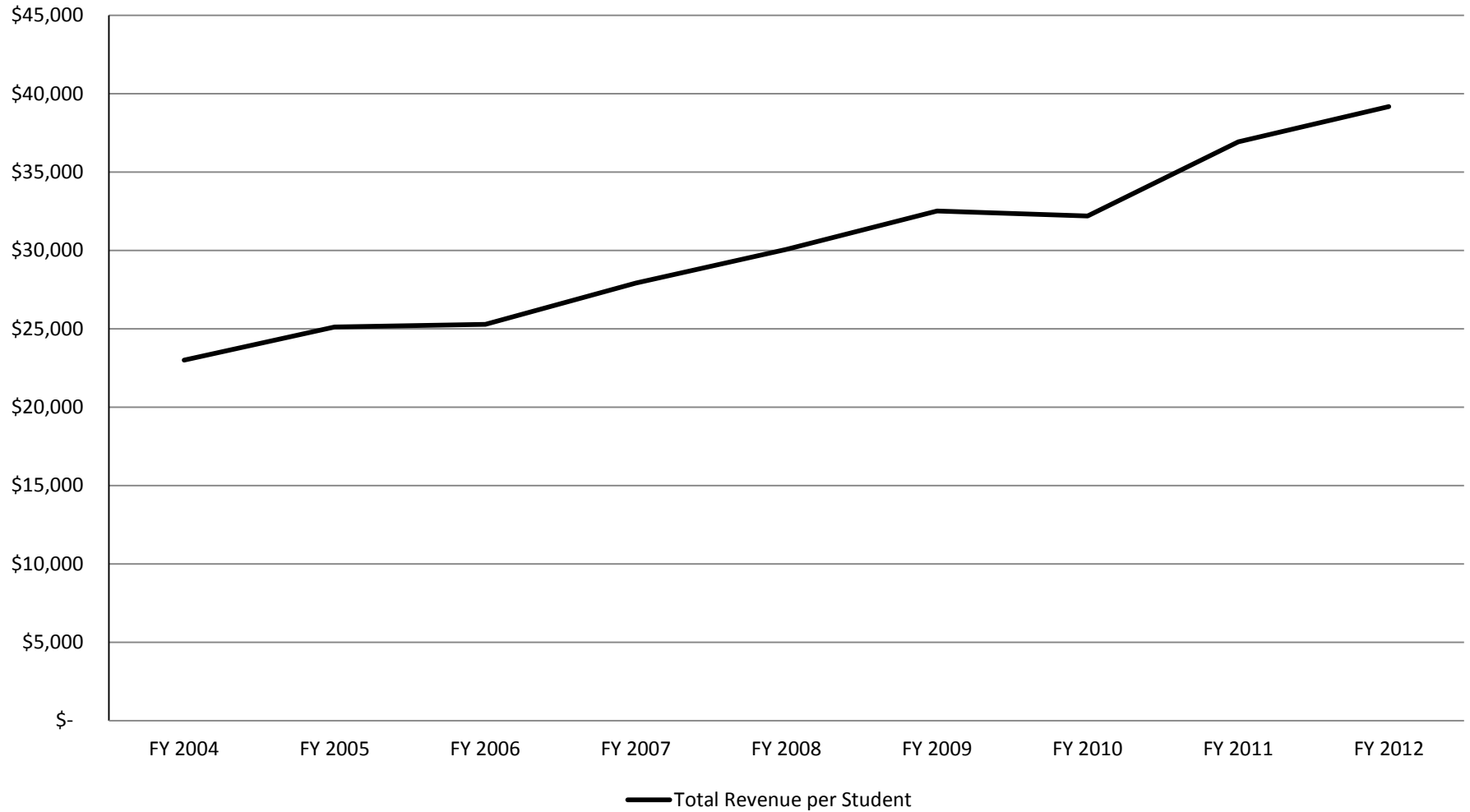
Source: University of Wyoming Staffing Report to the Joint Appropriations Committee, July 2012.

University of Wyoming (Agency 067) All Other Non-Faculty FTE Employees Prepared for the Joint Appropriations Committee



Source: University of Wyoming Staffing Report to the Joint Appropriations Committee data set, July 2012.

University of Wyoming (Agency 067)
Section I and Section II Revenue per Student FTE
Prepared for the Joint Appropriations Committee
(Student credit hours - based on faculty home department)



Sources: UW Budget History Report to the Joint Appropriations Committee, July 2012, and University of Wyoming Academic Planning Standard Data Sets excluding WWAMI Medical Education students.