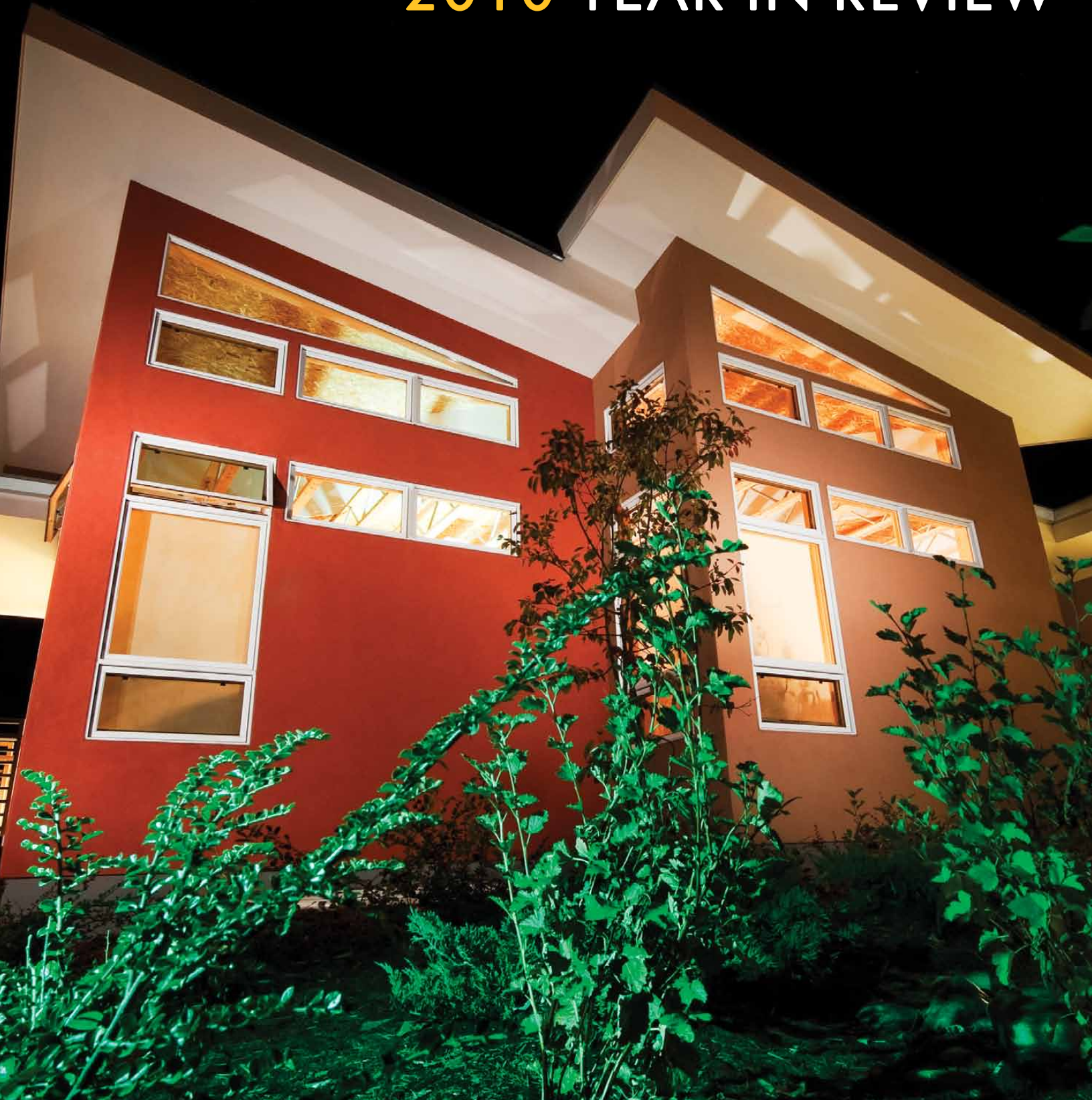




2010 YEAR IN REVIEW



ENR BOARD

Indy Burke, Director, ENR

Story Clark

Gary Collins

John Corra

Liliane Haub

Pete Jorgensen

Frosty Kepler

Whitney MacMillan

Mark Northam

Terry O'Connor

Dave Palmerlee

Rick Robitaille

Jane Sullivan

Mike Sullivan

John Turner, Chair



Welcome to the 2010 Annual Report for the Environment and Natural Resources Program at the University of Wyoming. It's been a tremendous year, full of changes and growth, and we have many successes to report.

I must first begin by extending our gratitude to Don and Bim Kendall, who made our vision for an inspiring new space for the ENR Program a reality. The Kendall House is a model for the UW campus and the broader community for how to build and renovate sustainably and affordably.

The Kendall House provides an inspirational gathering place for our growing ENR student body. In just the last year, 63 new students enrolled in our major, and we graduated 44 with ENR majors in Spring '10. Nearly all of our courses are enrolled to the maximum, serving students from across the university. We added two new courses with field laboratories to expose students to natural resources, with Wyoming as our case study. And to advance learning in a global context, we provided scholarship support to send students to Ecuador, Panama, Europe, Argentina, Brazil, China, and Kenya to gain experience in international ENR challenges.

An ever-growing number of Wyoming Conservation Corps (WCC) crews and projects continues to cultivate goodwill and recognition of the ENR program throughout the state. Last year, WCC hired 46 students to complete 36 projects (read more inside) that improved public lands.

The Ruckelshaus Institute has had an impactful year with the addition of the Spicer Chair, Dr. Steve Smutko. In his first year, Dr. Smutko has already assisted Wyoming stakeholders with collaboration on several key issues and has initiated a new program that trains natural resource professionals in facilitation, negotiation, and communications skills. We are proud to be the "go-to" place in the state for assistance with collaborative approaches to complex natural resource issues. Our newly structured ENR Senior Advisory group and Board are providing thoughtful leadership as we chart a course for the future.

A tough economy has provided opportunities to become more efficient and productive, even as we serve more students than ever. We owe many of our successes over the past year to partnerships with each of UW's colleges and with a growing number of talented faculty members. I believe we have the finest staff in the university, and in collaboration with our dedicated Board and Senior Advisors, we will continue to do great things in the coming year. Thanks to all of you for your continued support of the UW Environment and Natural Resources Program. We are looking forward to some exciting new initiatives in the year ahead.

Best Wishes,

A handwritten signature in black ink that reads "Indy Burke".

Director

BIM KENDALL HOUSE



Thank you to Don and Bim Kendall for their generous donation that has led to our new building. The Kendall House is a model for our community in sustainable and affordable building principles, and we will soon seek green building certification from the U.S. Green Building Council.

Within the building, you'll find...

- A passive ventilation system in lieu of a traditional electrically powered system.
- A photovoltaic system that generates approximately 30 percent of our electrical needs.
- Rapidly renewable materials such as cork and rubber flooring, and flooring made from pop bottles and used car tires.
- Furniture and finishes that promote indoor air quality and do not off-gas harmful Volatile Organic Compounds (VOCs).
- Energy efficient windows and insulation.
- More than one-quarter of our construction waste was diverted through recycling and re-use.
- Low-water xeriscaping—the Bergman Gardens.

HELGA OTTO HAUB SCHOOL

Interdisciplinary Majors

The most popular concurrent majors among ENR undergraduate and graduate students are Geography (17), Rangeland Ecology and Watershed Management (15), Law (14), and International Studies (11). ENR students represent 35 different concurrent majors across all seven UW colleges.

Funding for Student Research

The Haub School awarded more than \$46,000 in grants and scholarships during the academic year ending in May 2010, including the Vern Bressler Fisheries fund, the Erivan Haub Scholarship, the Chiles and Evelyn Plummer Scholarship, and the Haub Fund for Research and Creative Activities. These funds supported student field research at sites throughout Wyoming, and the West, as well as international destinations, including Belize, China, Kenya, and Panama.

Leadership in ENR

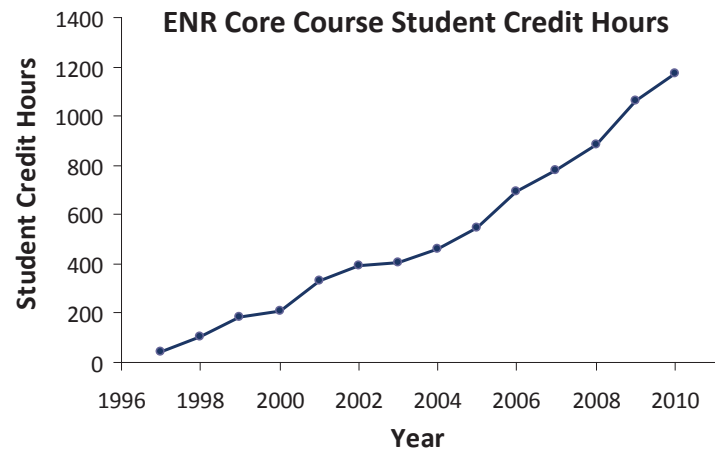
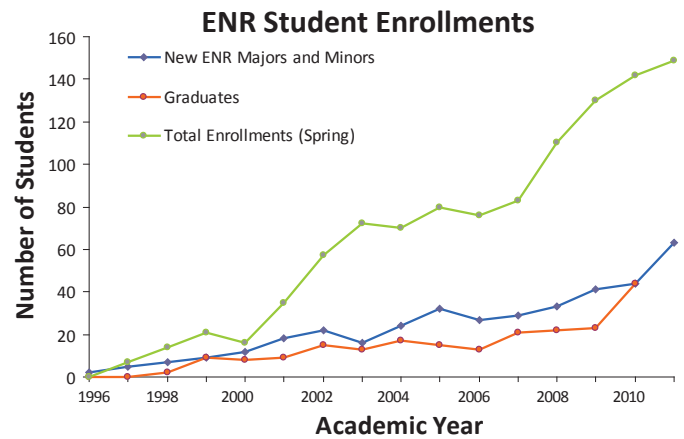
- Kathryn Flagg (MFA Creative Writing/ENR) received a prestigious \$10,000 Middlebury fellowship in Environmental Journalism.
- Nick Haderlie (JD/MA ENR) was named Comment Editor of the Wyoming Law Review.
- Program alumni Emilene Ostlind (BA English/Fine Arts/ENR and MFA Creative Writing/ENR) and Joe Riis (BS Wildlife and Fisheries Biology and Management/ENR) brought "Pronghorn Passage," their presentation documenting the migration of pronghorn antelope from Grand Teton National Park to the Red Desert, to packed crowds throughout the state.

Diversity in ENR

Two American Indian students are emerging as leaders in ENR. Ernest Lawson (BA American Studies/ENR) was chosen from a highly competitive pool of applicants to attend the Ecological Society of America's November workshop, "The Future of Environmental Decisions." The Hopa Mountain fellowship, honoring an individual committed to improving ecosystem health on tribal lands, was given to Antone Lopez (BA American Indian Studies/ENR).

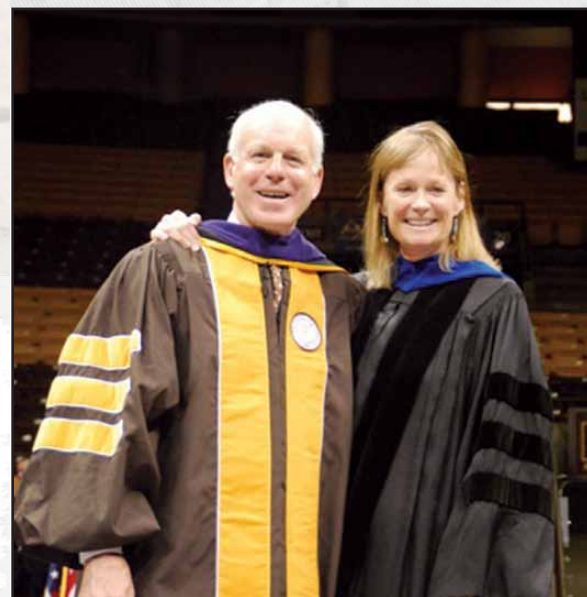
DIRECTOR NEWS

Director Burke was elected Fellow of the American Association for the Advancement of Science (AAAS), considered the world's largest and most prestigious scientific organization. In November, she was appointed to serve on the Environmental Protection Agency's (EPA) Science Advisory Board. Burke also serves on a National Research Council committee to evaluate the economic and environmental considerations for biofuels in the U.S.



Haub School Curriculum Review

During 2010, Haub School faculty and staff launched a programmatic assessment and review initiative to evaluate the current program model and to set long-term goals and priorities for growth and enhancement. The Haub School has held two open forums and several meetings for this process. A 15-member steering group composed of the Haub School Faculty Advisory Committee has been charged with this effort. This assessment is based on priorities identified in both the university and school academic plans and will pave the way for future program development. The assessment is scheduled for completion in the summer of 2011.



ENR Board Chair John Turner with Director Indy Burke during the 2010 UW Commencement. Turner, who served as Director of the U.S. Fish and Wildlife Service (1989-1993), was awarded the Doctor of Laws, honoris.

WILLIAM D. RUCKELSHAUS INSTITUTE

Coalbed Methane Produced Water Working Group

The Ruckelshaus Institute assisted the Wyoming Department of Environmental Quality (DEQ) in a stakeholder-driven process for developing a new permitting strategy for coalbed methane (CBM) produced water discharge in the Powder River Basin. The CBM Produced Water Working Group was composed of landowners, industry representatives, members of the conservation community, and agency personnel. ENR's Spicer Chair, Dr. Steve Smutko, led the working group through a decision-aiding process that spanned nearly a full year. With input from a scientific advisory team, the working group was able to successfully develop a suite of recommendations for the DEQ's revised CBM produced water discharge permitting policy. The DEQ is currently soliciting comments from the working group on its draft strategy.

Institute Training Series

In 2010, the Ruckelshaus Institute completed its first training series on "Natural Resource Decision Making and Communications," in collaboration with the Wyoming Agriculture and Natural Resource Mediation Program. The workshops included "Facilitating Controversial Public Issues," "Negotiation Skills in Natural Resource Management," and "Media and Communication Skills." The trainings drew participants from state and federal natural resource management agencies, as well as the private sector. The 2011 training schedule will be available in March on the Institute's Web site at www.uwyo.edu/enr/ienr.

Bark Beetle Management Workshop

In October 2010, the Ruckelshaus Institute hosted a two-day technical workshop in Laramie on the bark beetle epidemic. The event was attended by more than 75 forest managers, scientists, and researchers from across the Intermountain West. The workshop was sponsored by the Bureau of Land Management, U.S. Forest Service, Wyoming State Forestry Division, Laramie Rivers Conservation District, and Neiman Enterprises, Inc. Workshop participants identified "desired future conditions" for forest types impacted by the current outbreak – ponderosa pine, Douglas-fir, lodgepole pine, and spruce-fir – and discussed management strategies to mitigate impacts and minimize future outbreaks. An Institute report on the workshop findings is scheduled for release in 2011.

WYOMING CONSERVATION CORPS

SNAPSHOT OF THE 2010 FIELD SEASON

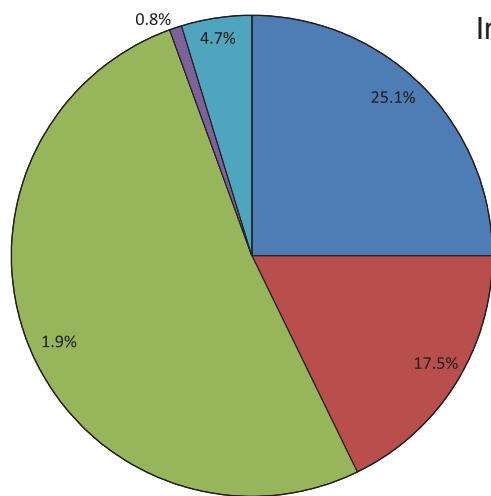
31,000 + hours of service on public lands; 48 students with 6 crews completed 12 miles of fencing; 14 miles of mountain bike trails; 300 feet of bridges and boardwalks; and 6,000 transplanted willows

More than \$68,000 in AmeriCorps scholarships; 36 Wilderness First Aid certifications; 12 Wilderness First Responder; and 48 Leave No Trace certifications

- 15 projects with Wyoming State Parks and Cultural Resources, including building trails and fences, restoring historic sites, and assisting park staff with general maintenance efforts.
- 8 projects with the Bureau of Land Management (BLM) across the state, including developing river access trails along the Green River outside of Pinedale, building wildlife-friendly fences in cooperation with Devon Energy and the BLM's Rawlins office, and collecting native seeds throughout the state in order to establish reliable seed banks for post-disturbance reclamation.
- 6 projects with Medicine Bow National Forest mitigating the impacts of pine beetles in high recreational use areas, decommissioning roads, and improving campsite infrastructure.
- 3 projects with the Casper Nordic Center, which involved expanding the network of nordic trails and conducting initial work in clearing and thinning trees for a new biathlon trail.
- A new partnership with Grand Teton National Park and The Murie Center, which included connecting the Murie homestead by trail to the new Craig Thomas Discovery and Visitor Center. Crews also completed trail work and constructed an outdoor interpretive classroom for workshops held at Jenny Lake. The WCC also worked with the National Elk Refuge replacing dilapidated buck and rail fence around the historic Miller House located on the Elk Refuge.

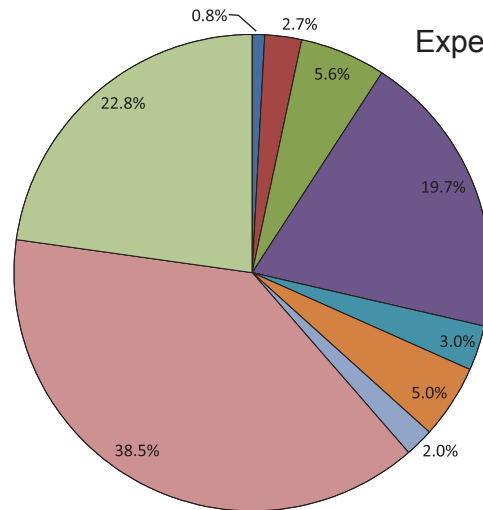


ENR FINANCIAL SNAPSHOT



Income

- State
- Endowment Income
- Contracts and Grants
- Conferences and Trainings
- Gifts



Expenditures

- Graduate Students
- Operations
- Research and Outreach
- Travel
- Scholarships
- Kendall House
- Contracted Services
- Full Time Salaries & Benefits
- Undergrad Salaries & Benefits

The figures above represent total revenues and expenditures for Fiscal Year 2010 (July 1, 2009 to June 30, 2010). Income figures were derived from state allocations to ENR, interest from endowments, various grants, and monetary gifts. The total of these funding sources is more than \$1.5 million.

ENR FY 2010 Scholarships and Endowments

Chiles and Evelyn Plummer Scholarship
 Vern Bressler Fisheries Fund
 David & Jade Walsh Excellence Fund
 Erivan Haub Scholarship in Environment and Natural Resources
 Helga Otto Haub School of Environment and Natural Resources Endowment
 William D. Ruckelshaus Endowment
 Eldon and Beverly Spicer Chair in Environment and Natural Resources

Wyoming Conservation Corps FY 2010 Grants

Corporation for National and Community Service-AmeriCorps
 UW School of Energy Resources
 Wyoming Reclamation and Restoration Center
 Devon Energy
 Anadarko Petroleum Corp.
 EnCana Natural Gas
WCC Service for Fee (FY 2010 Agreements)
 Bureau of Land Management, National Park Service, USDA-Forest Service, Wyoming State Parks and Historic Sites, Wyoming Game and Fish, Wyoming Office of State Lands and Investments, Wyoming Water Development Office, Casper Biathlon Club, The Nature Conservancy, Arapaho Ranch, The Murie Center, The National Elk Refuge

This report recognizes gifts made during ENR's Fiscal Year 2010. A listing of corporations, foundations, and individual supporters follows.

Corporations and Foundations

Anadarko Petroleum Corporation
 Appraisal & Valuation Services
 Arch Coal, Inc.
 The Argosy Foundation
 Boeing Gift Matching Program
 Devon Energy Corporation
 EnCana Oil & Gas USA, Inc.
 ExxonMobil Foundation
 Fairfield County Community Foundation
 First Interstate BancSystem
 HAF Inc.
 The Murie Center
 The Perkins Charitable Foundation
 Rocky Mountain Power
 Vanguard Charitable Endowment Program
 WEM Foundation

Individuals

Thomas R. and Amy M. Allen
 Lora J. Bergert
 Richard H. and Ann L. Boelter
 Freddie and Annegret Botur
 Ingrid C. Burke
 Ralph Cavanagh
 Roy L. and Caryl L. Cline
 Gary Collins

John V. and Carma L. Corra
 Daniel E. Doll
 Deb Donahue
 Stephen R. Duerr
 Deborah M. Finch
 John N. Gans
 Larry R. and Suzanne D. Good
 Sarah A. Gorin
 Christian and Liliane Haub
 Bern S. Hinckley
 Philip MacKay and Jean Witmeyer Hocker
 James W. and Rochelle A. Holt
 Jonathan E. & Allison K. Iversen
 Robert and Linda Keiter
 Joe R. and Cassandra Manuelito-Kerkvliet
 Stephanie A. Kessler
 Linda M. Kiisk
 Jay and Kitty Kirby
 Larry Krause
 William K. Lauenroth
 Claire Leon
 Tom Lockhart
 Daniel F. and Rosemary L. Luecke
 Whitney and Elizabeth MacMillan
 Michael D. Marcus
 Thomas W. L. "Tad" McCall, Jr.
 Alan D. and Terri P. McGaffin

Christopher G. Morgan
 Nathan R. Morrison
 Susan Consolo Murphy
 James E. Nielson
 Kenneth E. and Carol M. Hennessy Nysson
 Terry L. and Carolyn K. O'Connor
 Benjamin R. and Lynette A. Parkhurst
 Edward B. and Marianne M. Pollak
 William B. and Story Clark Resor
 Andrew and Margaret Rothleitner
 William D. Ruckelshaus
 Charles C. and Mary J. Rumsey
 The Honorable John C. and Nancy L. Schiffer
 Michael D. and Tiffany T. Smith
 Governor Michael J. and Jane M. Sullivan
 Richard J. and Mary Lou Taggart
 Kathleen I. Taimi
 John F. and Mary Kay Turner
 Stephen M. and Amy B. Unfried
 Greg Veregin
 Tommy J. and Betsy K. Wagner
 Laurence Weinberg
 Dickson Whitney
 Peter I. and Marla S. Wold
 Wade D. Wykert
 Harold L. and Aeri E. York
 Anne N. Young



UNIVERSITY OF WYOMING

Environment of Natural Resources Program

University of Wyoming

Bim Kendall House

804 Fremont St.

Laramie, WY 82072

Phone: (307) 766-5080

Email: senr@uwyo.edu (School),

ienr@uwyo.edu (Institute),

wcc@uwyo.edu (WCC)

www.uwyo.edu/enr

Director and Wyoming Excellence Chair

Indy Burke

Associate Director

Nicole Korfanta

Assistant Directors

Courtney Carlson

Jill Lovato

Spicer Distinguished Chair

Steve Smutko

Cline Distinguished Chair

Fred Ogden

Wyoming Conservation Corps

Kendall Peacock

Tim Sowecke

Director of Communications

Chamois Andersen

Research Scientist

Anne Jakle

Student Advising Coordinator

Maggie Bourque

Administrative and Operating Staff

Ted Haskell

Nancy Hoffer

Maureen Morrison

Amber Wilson



Printed with soy and
vegetable-based inks.

Production and layout by Chamois Andersen

Name(s): _____ Enclosed is a gift of \$ _____

Address: _____

City: _____

State: _____ Zip: _____

Email: _____

This gift is designated for:

Thank you. Your gift really matters!

ENR General Fund

(or direct your payment to one of our entities below)

Haub School of Environment and Natural Resources

Ruckelshaus Institute of Environment and Natural Resources

Wyoming Conservation Corps

Other (student scholarships) _____

Please return in enclosed envelope, or send to:

University of Wyoming Foundation

1200 East Ivinson Street

Laramie, WY 82070

Donation by telephone: Please call the University of Wyoming Foundation
during normal business hours: (307) 766-6300 or (888) 831-7795.

Donation via online: Please make a gift using our secure server:
www.uwyo.edu/giveonline

Yes, please send me information about planned giving (wills, trusts, etc.).

Yes, UW is named in my will.

Yes, my company matches my gifts. I have included a form from my company.

M11N2

Thank you. Your gift is tax deductible as provided by law.